

Using the AED

Only 3 steps

① Turn on the AED

Slide the power switch and open the lid

The pads placement indicators blink.



Before using the AED, check:

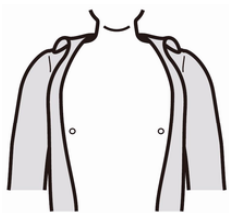
- Patient is unconscious
- Patient is not breathing
- Patient has no pulse (medical team only)

AED (Automated External Defibrillator)

- Defibrillation: Eliminate abnormal heart rhythm such as Ventricular Fibrillation (VF) with electrical shock
- Ventricular Fibrillation: is a type of abnormal heart rhythm which causes loss of pumping of the heart

② Attach the defibrillation pads

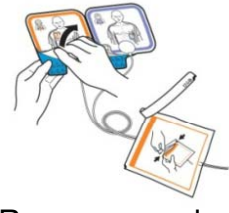
Follow the voice instructions.



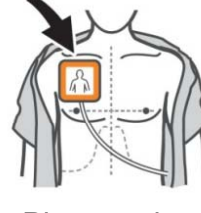
Remove clothing from chest



Open package



Remove a pad from its protective sheet



Place pad on upper right chest



Remove the other pad from its protective sheet



Place the pad to the lower left chest



Check that pad placement indicators are not blinking

When the pads are attached, the AED starts to analyze the heart rhythm.

Stay away from the patient and follow the voice instruction.

③ Press the shock button

AED charges the energy if necessary and the shock button flashes.



Do not touch patient. Press flashing button

When you hear this instruction, confirm that no one is touching the patient and press the flashing Shock button

After defibrillation shock was delivered or the AED decided that defibrillation shock was not needed, start chest compressions and rescue breathing (CPR)

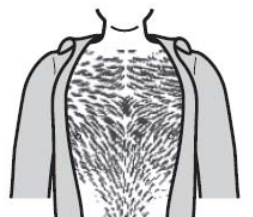
Precautions During Resuscitation

- Place the defibrillation pads on the patient's bare chest.
- Medicine patch: Remove the patch and wipe the chest before placing the pads.
- Water: Wipe the patient's chest with a towel before placing the pads.
- Implanted pacemaker: Place the pads at least 8 cm away from the implanted pacemaker.
- Hairy chest: Press the pads firmly against the skin or shave the area under the pads with a razor before placing the pads.
- Don't touch the patient while analyzing the heart rhythm and delivering the shock.



The following conditions can interfere with the AED when it is analyzing the heart rhythm

- Do not reuse the pads.
- Do not use mobile phones and wireless equipment within 1m of the AED.
- Turn off electrical appliances near the AED.
- Stop the car when using an AED.
- Use the AED away from overhead cables on a train station platform.



Accessories

- Barrier device for rescue breathing
- Disposable latex-free gloves
- Towel
- Disposable towel
- Scissors
- Disposable razor



Child mode

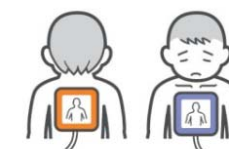


If the patient is preschool age, set the adult/child mode switch to "child" and change to the child defibrillation pads (if available).



When the patient body is big:

If the two pads do not touch each other, place the pads on the adult places.



When the patient body is small:

If the patient's body is small and the two pads touch each other, place one pad on the center of the chest and the other on the back.